



"D" Race Timing Tag Instructions



Step 1



Remove shoe tag and directions from bib

Step 2



Separate shoe tag from directions by folding at perf and tearing apart

Step 3



Crease tag on fold lines

Step 4



Insert under lace face down

Step 5



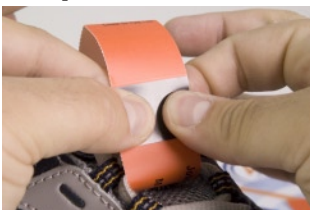
Remove adhesive tab (located on backside of marked black area)

Step 6



Attach adhesive tab to non-adhesive tab

Step 7



Press together firmly forming a "D" shape

Step 8



Position tag number side up